

TACTICAL BREACHING DOOR MOUNTING INSTRUCTIONS

The tactical door can be mounted standing free against a wall using the floor and wall foothold or by welding it into a container or mounting it into a wooden building with fixed walls.

The door may not be mounted where the temperature exceeds 70-80 degrees Celsius. The steel construction may bend when heated making it impossible for the breakable pins to fit.

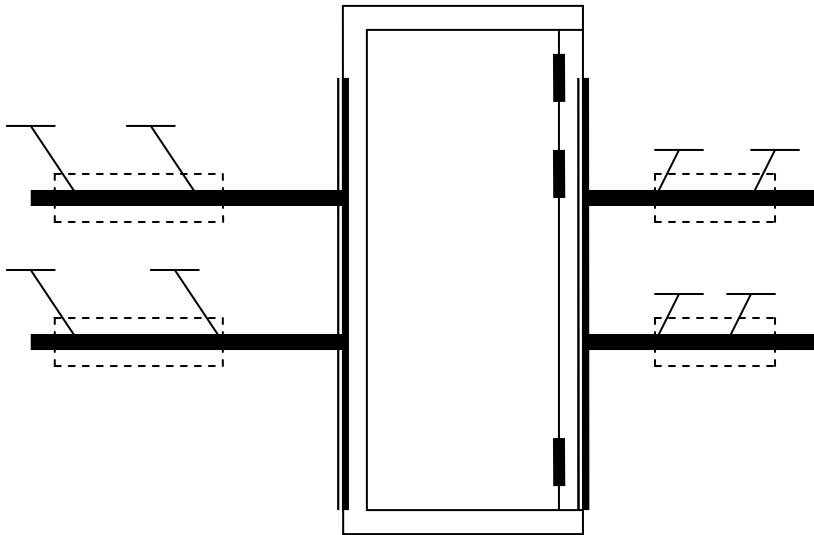
Where ever the door is mounted there must be strong and stabile frames to fix the door into. There is enormous force involved in the technique breaching doors. When mounting towards a wall we recommend our floor and wall foothold. See pictures below.



The wall mounting can easily be lifted of the door and folded straight down if the door needs to be moved to another location.

The floor foothold is easily lifted of the bolts if necessary. The head of the bolts then will be approximately 3-4 centimetres above the floor.

An alternative to the floor and wall foothold is to squeeze the door between to U-formed metal bars. The metal bars are then fixed to the wall on either side of the wall. This will make it easy to change between different size doors or changing between real doors and the tactical training door.



Welding the tactical training door into a container must be done with caution. The heat from welding may cause the metal to twist or bend. We recommend that you only weld at some points on the frame and not along the entire side.

The welding points should be done on the vertical sides of the frame.

When the tactical door has been supported along the vertical sides the metal bar on the middle of the door can be removed. The metal bar is only used together with the floor and wall foothold to prevent the frame from moving when breaching on the door.

Example can be seen in the instruction manual.

To be able to remove parts of breakable pins in the frame (3 places in the frame) there must be holes in the holding so that another breakable pin can be used from the “other” direction to push out remaining parts.



Before mounting the door should be looked at all 4 places.
3 places with breakable pins and one place with the fixed locking point.

The door must be mounted on a flat surface and straight both vertical and horizontally.
If the door is mounted in a correct way, the breakable pins and fixed locking point will be easy to remove and put back in. There is an adjustable plate on the threshold making it possible to adjust 1-3 millimetre.

After mounting the door the users may configure the door accordingly to the user manual.

Read the user manual before any breaching exercises. The manual will be sent separately and together with the invoice.

All locking points are positioned accordingly to Daloc S43 high security door, 2008.
All doors are tested before deliverance.

J M Mekaniska AB
Milton Carlson

PerMicke HB
Per-Erik Bärneman
Mikael Lindkvist

**For advice concerning mounting contact your local dealer or milton@jmmek.se
For other questions contact your local dealer or evighetsdorren@live.se**